

## **Active Directory Integration with Windows 2003 Server**

The ability to integrate your ReadyNAS® storage system into an existing Active Directory Windows ADS (Active Directory Service) is a supported security mode on all business class ReadyNAS products, including ReadyNAS NVX, Pro, 2100, 3100, 3200 and 4200 Business models.

The **Domain** security mode is most appropriate for larger department or corporate environments, where a centralized Windows-based domain controller or active directory server is present. The network storage device integrates with this environment by creating a trusted relationship with the domain/ADS authentication server and allowing all user authentications to occur there, eliminating the need for separate account administration on the device itself. In this security mode, each domain/ADS user is automatically provided with a private home share on the ReadyNAS Business Edition.

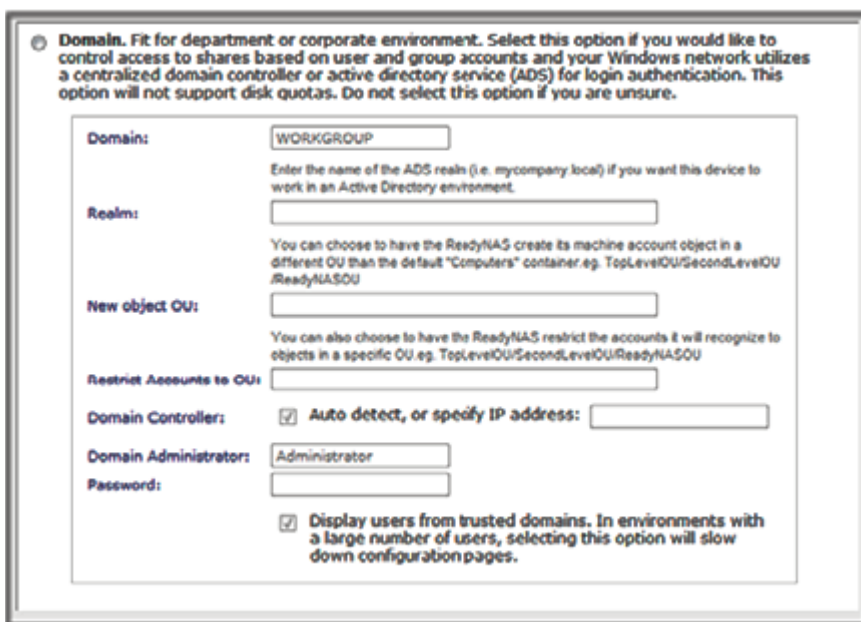
In this security mode, each domain/ADS user is automatically provided with a private home share on the ReadyNAS.

This allows administrators to assign access policies to secure their environment and lower their maintenance cost by having centralized management.

Configuring your ReadyNAS for full Windows ADS integration can be achieved in just a few simple steps:

On your ReadyNAS, select **"Security"**, then the **"Security Mode"** tab. Select **"Domain"**.

Note the warning message and select **"OK"** to proceed.



**Domain.** Fit for department or corporate environment. Select this option if you would like to control access to shares based on user and group accounts and your Windows network utilizes a centralized domain controller or active directory service (ADS) for login authentication. This option will not support disk quotas. Do not select this option if you are unsure.

**Domain:**

Enter the name of the ADS realm (i.e. mycompany.local) if you want this device to work in an Active Directory environment.

**Realm:**

You can choose to have the ReadyNAS create its machine account object in a different OU than the default "Computers" container. eg. TopLevelOU/SecondLevelOU/ReadyNASOU

**New object OU:**

You can also choose to have the ReadyNAS restrict the accounts it will recognize to objects in a specific OU. eg. TopLevelOU/SecondLevelOU/ReadyNASOU

**Restrict Accounts to OU:**

**Domain Controller:**  **Auto detect, or specify IP address:**

**Domain Administrator:**

**Password:**

**Display users from trusted domains.** In environments with a large number of users, selecting this option will slow down configuration pages.

Provide all requested information:

- Domain name
- Domain administrator login
- Domain administrator password
- If using ADS
  - The DNS name of the ADS realm
  - OU (Organization Unit). You can specify nested OU's by separating OU entries with commas. The lowest level OU must be specified first.

You can elect to have the ReadyNAS automatically auto-detect the domain controller, or specify the IP address. (NOTE: If auto-detect fails, it will be necessary to provide the IP address of the domain controller to join the domain.)

If you have a large number of users, it is recommended that **"Display users from trusted domains"** be deselected, as it may slow configuration to an unusable state.

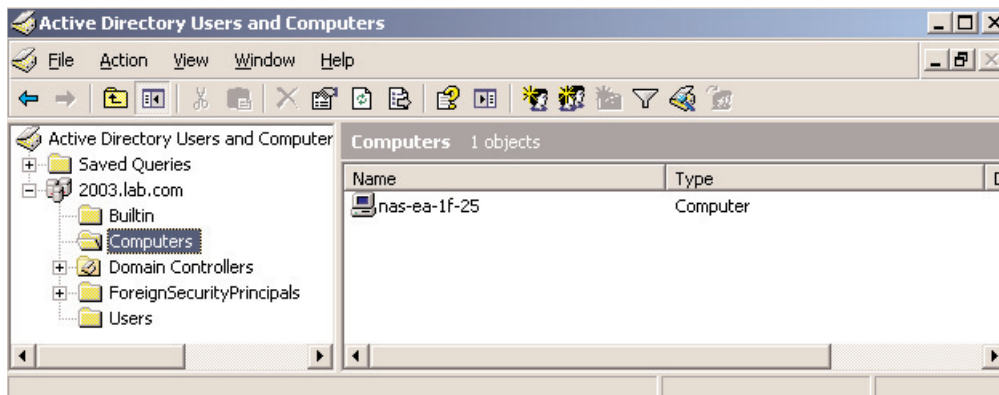
**Note:** NETGEAR® does not recommend the use of the ReadyNAS in a domain environment with more than 10,000 users.

Select **"Apply"** to join the domain. If auto-detection is successful, users and groups from the domain will have login access to the shares on this device.

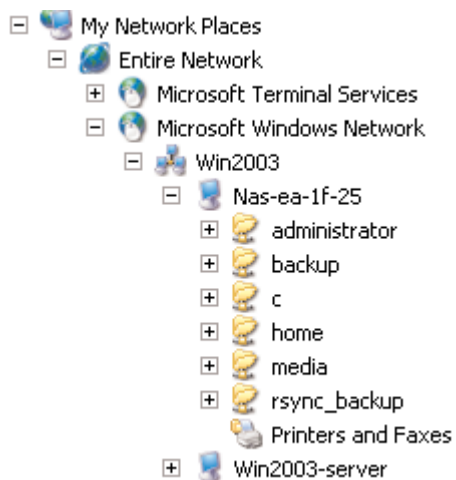
Accounts are managed on the domain controller. The ReadyNAS simply pulls the account information from the controller and displays it in the Accounts tab screen if the **"Display users from trusted domains"** option is enabled. If desired, a disk quota can be assigned to the domain users and groups. If e-mail addresses are specified, users are automatically notified when approaching and reaching their quotas.

Once the integration is complete, a confirmation message will appear.

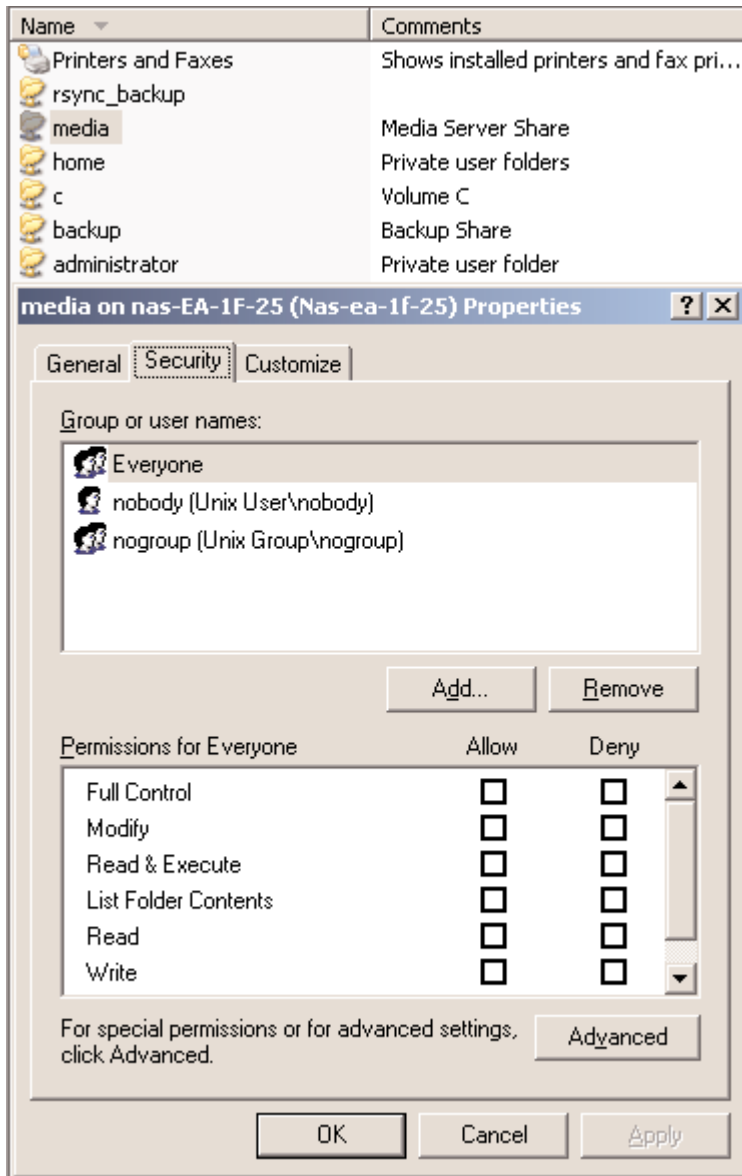
The ReadyNAS will appear as a computer object in the domain:



The ReadyNAS is also accessible via **"My Network Places"** in the workgroup:



To set folder/file level properties, simply right-click the desired folder on the ReadyNAS and select **"Properties"**, then **"Security"**:



For information on configuring shares and sub-folders on a ReadyNAS server to achieve equivalent Windows file server read/write permissions, see: "Setting up Active Directory folder permissions on the ReadyNAS", at: <http://www.readynas.com/?p=1987>